

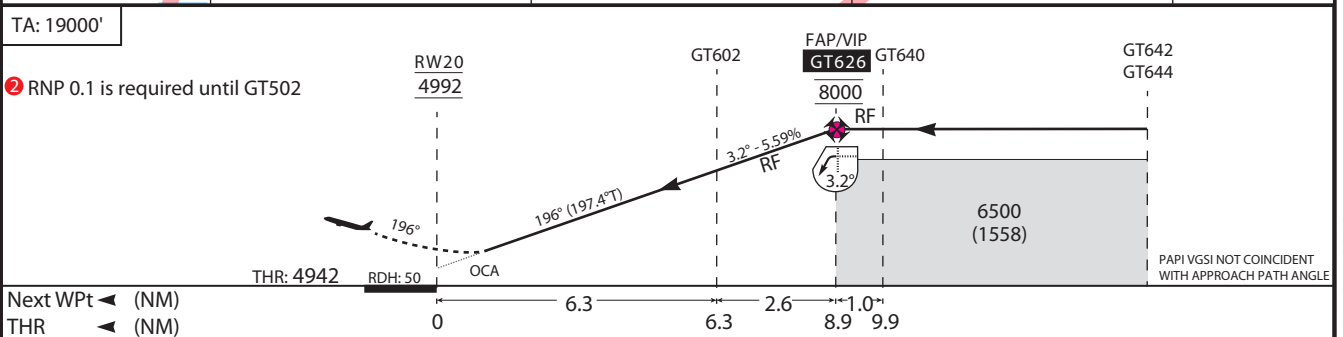
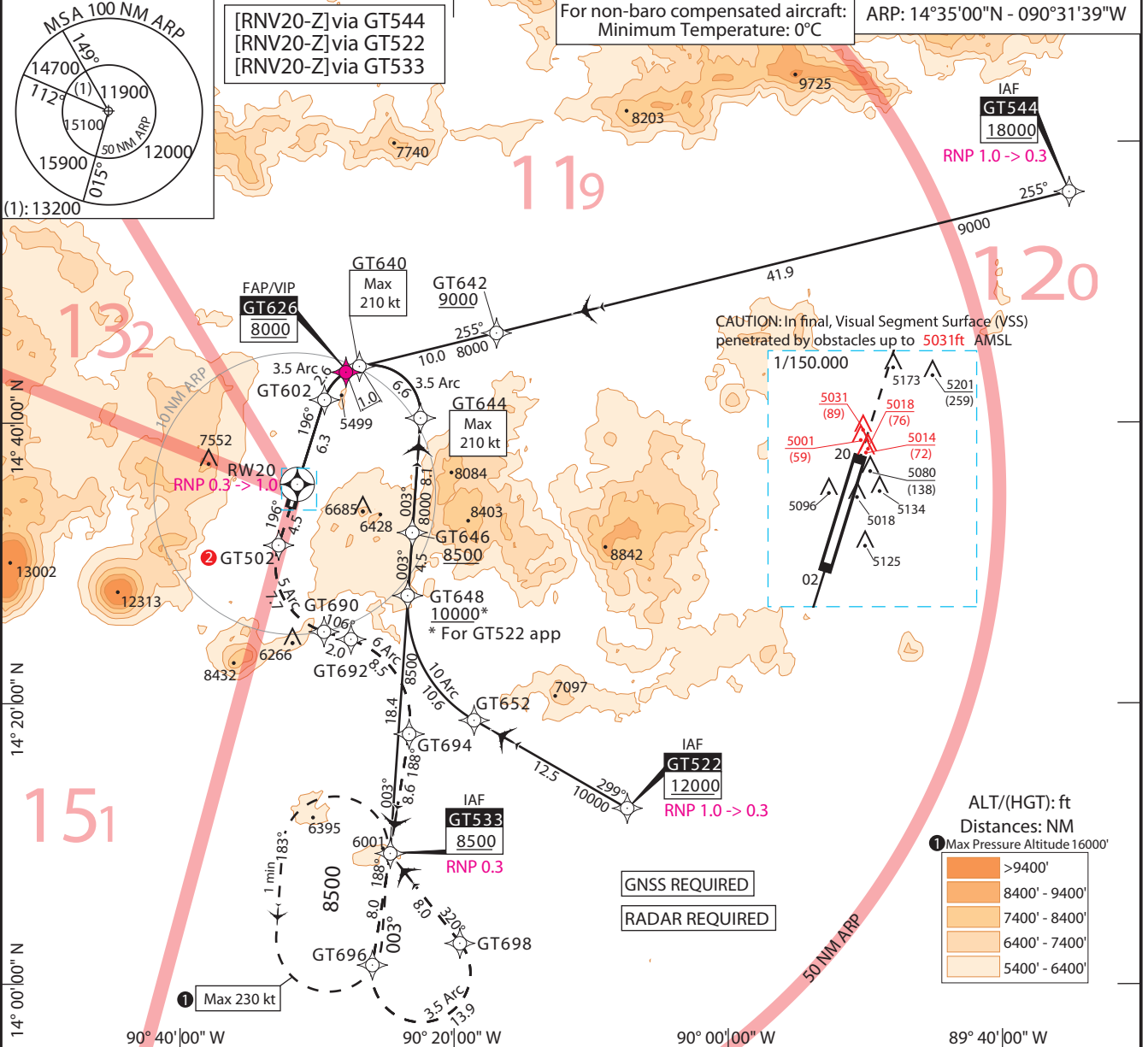
CAT: A B C D

LA AURORA - MGGT

AD ELEV: 4952, THR ELEV: 4942 (168 hPa)

RNAV (RNP) Z RWY 20

APP: 119.3 Tower: 118.1 GND: 121.9 ATIS: 127.65	AUTHORIZATION REQUIRED	VAR: 1°E (13)	APP 5
---	-------------------------------	---------------	-------



AD minima : Altitude and Height in feet. REF HGT: THR ELEV.

CAT	M.A. Climb Gradient : 2.5% 152 ft/NM				Missed Approach		
	RNP AR FINAL 0.3		RNP AR FINAL 0.1		Climb to minimum 8500 via the RNAV (RNP) missed approach track to GT533. At GT533 hold or start a new approach via GT533.		
	OCA (H)	DA (H)	OCA (H)	DA (H)	CAT	ceiling	visibility
A	5336(394)	5340 (398)	5237(295)	5240 (298)	A	400 ft	1600 mts.
B	5349(407)	5350 (408)			B	400 ft	1600 mts.
C	5359(417)	5360 (418)	5238(296)	5240 (298)	C	400 ft	2000 mts.
D	5371(429)	5380 (438)	5250(308)	5250 (308)	D	400 ft	2400 mts.

MODIFICACION: NRO CARTA, GNS5 Y RDR RQRD.

RNP Z RWY 20															
PT	W/P ID	Flyover	Fix role	TD	CRS Val (T°)	DIST NM	ALT DESC	Altitude (ft)	SPD LMT	VRT ANG	NAV PERF	RADIUS NM	ARC CTR ID	Transition Identifier	Runway Direction
IF	GT522		IAF				+	12000.00 FT [ALT]			1.000 NM			GT522	
TF	GT652				300,034	12,512					0.300 NM			GT522	
RF	GT648			R	003,996	10,564	+	10000.00 FT [ALT]			0.300 NM	9,5	GTC27	GT522	
TF	GT646				003,996	4,500	+	8500.00 FT [ALT]			0.300 NM			GT522	
TF	GT644				003,997	8,137			210.00 KT		0.300 NM			GT522	
RF	GT640			L	256,120	6,589					0.300 NM	3,5	GTC10	GT522	
RF	GT626			L	239,147	1,037	@	8000.00 FT [ALT]			0.300 NM	3,5	GTC10	GT522	
IF	GT544		IAF				+	18000.00 FT [ALT]			1.000 NM			GT544	
TF	GT642				256,342	41,858	+	9000.00 FT [ALT]			0.300 NM			GT544	
TF	GT640				256,163	10,000			210.00 KT		0.300 NM			GT544	
RF	GT626			L	239,147	1,037	@	8000.00 FT [ALT]			0.300 NM	3,5	GTC10	GT544	
IF	GT533		IAF				+	8500.00 FT [ALT]			0.300 NM			GT533	
TF	GT648				003,991	18,363					0.300 NM			GT533	

PT	W/P ID	Flyover	Fix role	TD	CRS Val (T°)	DIST NM	ALT DESC	Altitude (ft)	SPD LMT	VRT ANG	NAV PERF	RADIUS NM	ARC CTR ID	Transition Identifier	Runway Direction
TF	GT646				003,996	4,500	+	8300.00 FT [ALT]			0.300 NM			GT533	
TF	GT644				003,997	8,137			210.00 KT		0.300 NM			GT533	
RF	GT640			L	256,120	6,589					0.300 NM	3,5	GTC10	GT533	
RF	GT626			L	239,147	1,037	@	8000.00 FT [ALT]			0.300 NM	3,5	GTC10	GT533	
IF	GT626		FAF				@	8000.00 FT [ALT]			0.300 NM				20
RF	GT602			L	197,396	2,550				-3,200	0.300 NM	3,5	GTC10		20
TF	RW20	Y	MAPT		197,396	6,300	@	4992.00 FT [ALT]		-3,200	0.300 NM				20
TF	GT502				197,388	4,494					1.000 NM			GT533	
RF	GT690			L	107,397	7,716					1.000 NM	4,9	GTC09	GT533	
TF	GT692				107,397	2,000					1.000 NM			GT533	
RF	GT694			R	189,037	8,547					1.000 NM	6	GTC34	GT533	
TF	GT533				189,037	8,602					1.000 NM			GT533	
TF	GT696				189,031	8,000					1.000 NM			GT533	
RF	GT698			L	321,793	13,882					1.000 NM	3,5	GTC44	GT533	
TF	GT533				321,793	8,000	+	8500.00 FT [ALT]			1.000 NM			GT533	