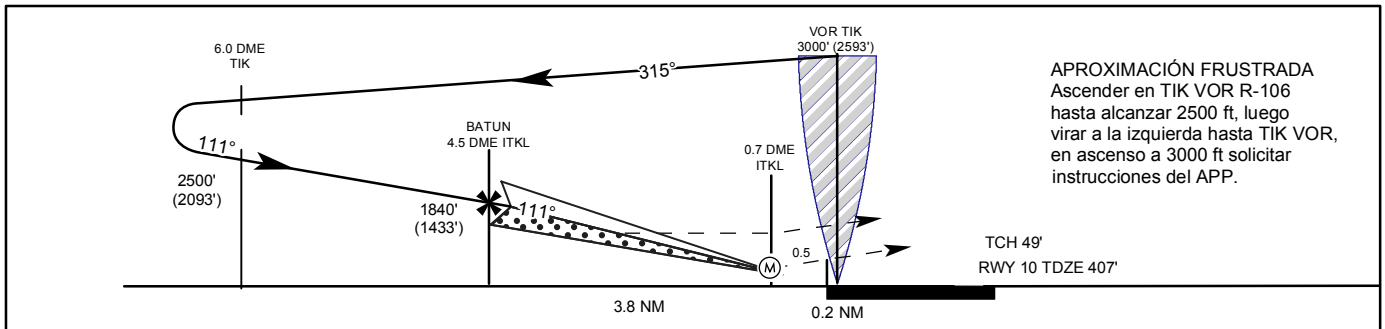
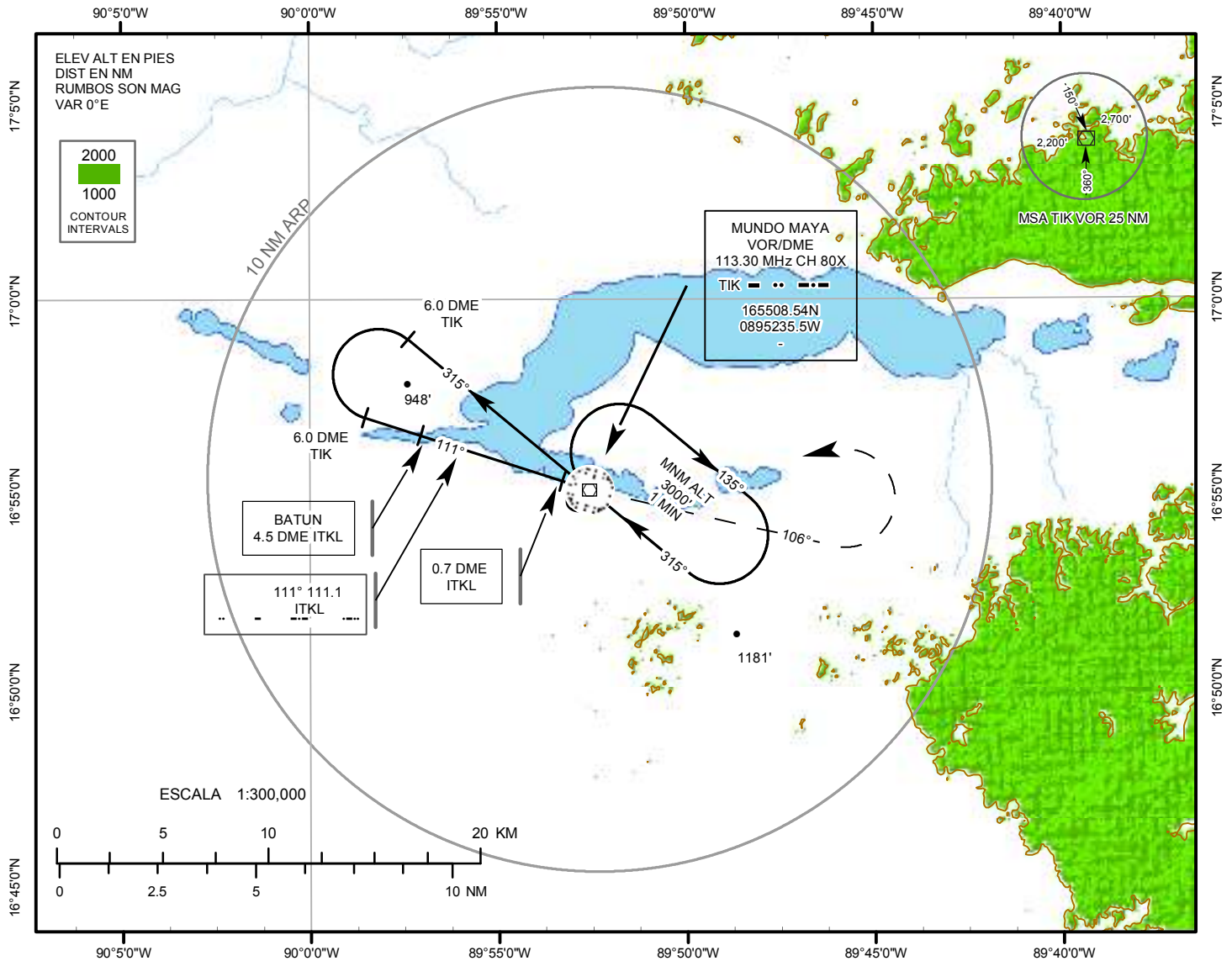


**CARTA DE APROXIMACIÓN  
POR INSTRUMENTOS**

ELEV AERÓDROMO 130m (427 Ft.)  
ALTURAS RELACIONADAS AL  
THR RWY 10 ELEV 407 Ft.

TIKAL APP 121.4 MHz  
TWR 118.3 MHz  
GND 121.9 MHz  
ATIS 127.850 MHz  
CLNC DEL 120.7 MHz  
EMERGENCY 121.5 MHz

**SANTA ELENA PETEN/  
MUNDO MAYA INTL  
ILS Z RWY 10**



Régimen de Descenso	Ft/minG S 3.0°	70	90	100	120	140	160	Circulando para aterrizar No autorizado al Sur de la pista	
ITKL-MAPT NM	Min	N/A	N/A	N/A	N/A	N/A	N/A		
Aprox. directa	ILS DA (H) 607' (200')		LOC (GS OUT) MDA (H) 840' (433')					MAX Kts	CIRCULANDO
CAT	FULL	ALS out	ALS out						
A	200' - 800 m		500' - 1200 m			90	1400' (973')	1000' - 2000 m	
B						120	1600' (1173')	1200' - 2400 m	
C						140	1700' (1273')	1300' - 4800 m	
D						165			