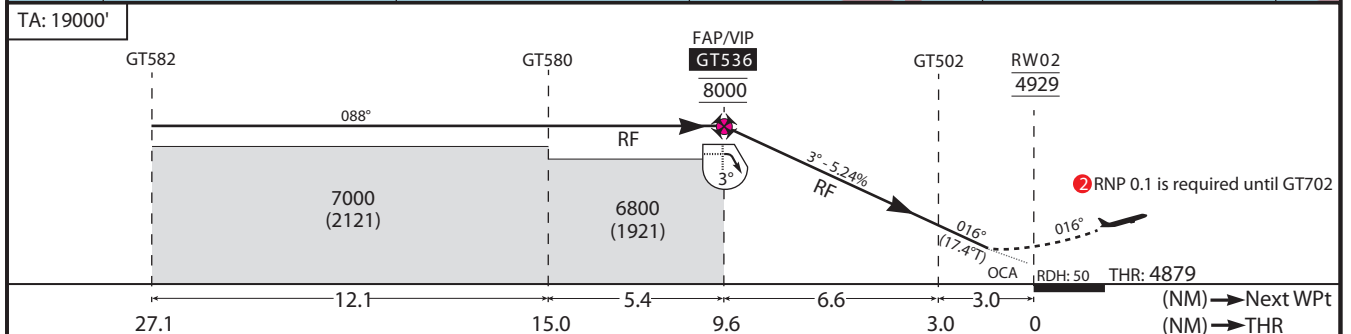
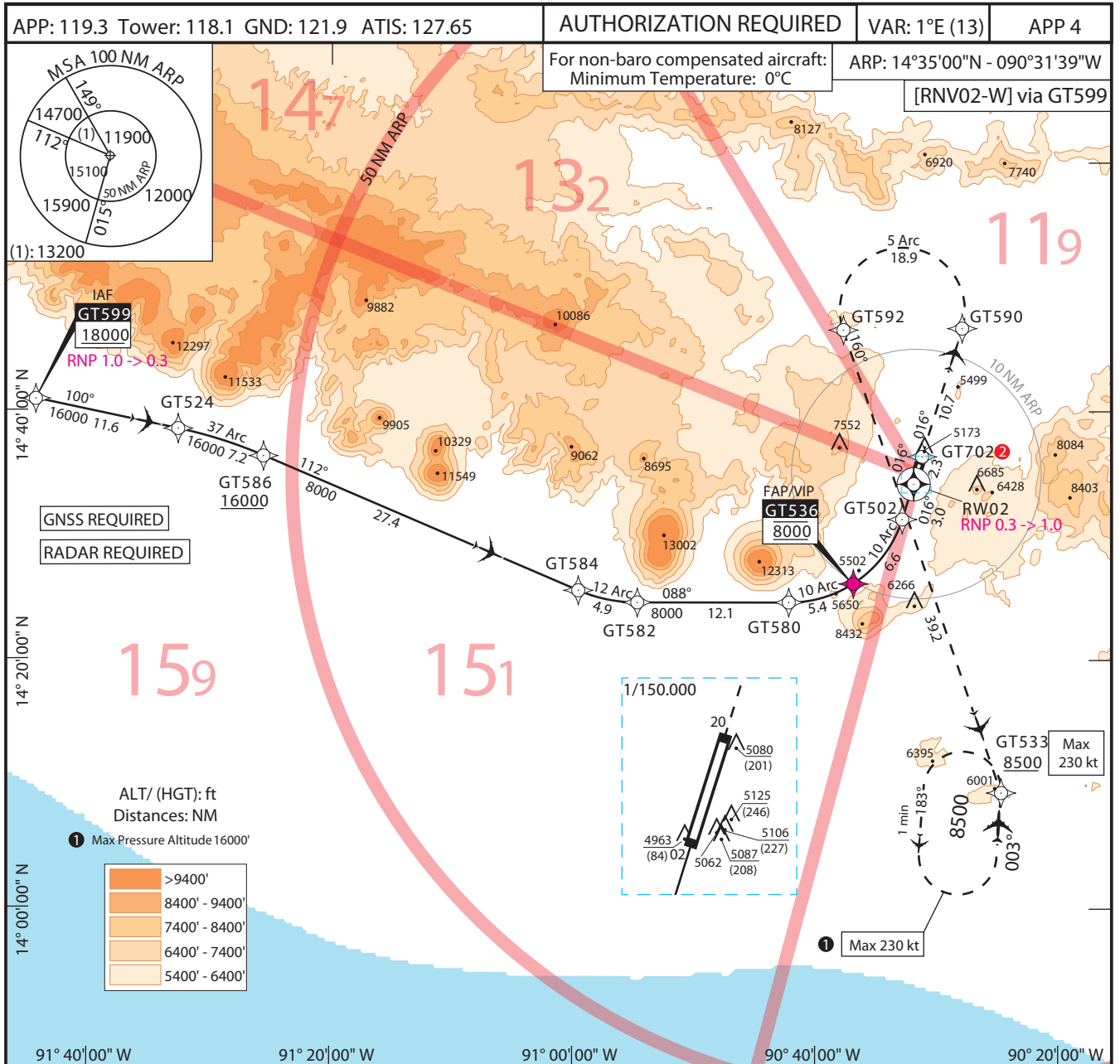


CAT: A B C D

LA AURORA - MGGT

AD ELEV: 4952,THR ELEV: 4879 (166 hPa)

RNAV (RNP) W RWY 02



AD minima: Altitude and Height in feet. REF HGT: THR ELEV.

CAT	M.A. Climb Gradient : 2.5% 152 ft/NM				Missed Approach		
	RNP AR FINAL 0.3		RNP AR FINAL 0.1		CAT	ceiling	visibility
	MA RNP 1.0		MA RNP 0.1 ②				
OCA (H)	DA(H)	OCA (H)	DA(H)				
A	5222(343)	5230(351)	5174(295)	5180(301)	A	400 ft	1600 mts.
B	5244(365)	5250(371)		5200(321)	B	400 ft	1600 mts.
C	5264(385)	5270(391)		5220(341)	C	400 ft	1600 mts.
D	5282(403)	5290(411)		5240(361)	D	500 ft	2400 mts.

RNP W RWY 02																
PT	W/P ID	Flyover	Fix role	TD	THETA (°) magnetic	CRS Val (°)	DIST NM	ALT DESC	ALT FT	SPD LMT KT	VRT ANG	NAV PERF	RADIUS NM	ARC CTR ID	Transition Identifier	Runway Direction
IF	GT599		IAF					+	18000			1.000 NM			GT599	
TF	GT524					101.756	11.635					0.300 NM			GT599	
RF	GT586			R	100.346	112.998	7.183	+	16000			0.300 NM	36.9	GTC14	GT599	
TF	GT584					112.999	27.422					0.300 NM			GT599	
RF	GT582			L	111.647	089.948	4.855					0.300 NM	12	GTC15	GT599	
TF	GT580					089.948	12.146					0.300 NM			GT599	
RF	GT536			L	088.540	057.416	5.406	@	8000			0.300 NM	9.5	GTC16	GT599	
IF	GT536		FAF					@	8000			0.300 NM				02
RF	GT502			L	055.956	017.387	6.640				-3.000	0.300 NM	9.5	GTC16		02
TF	RW02	Y	MAPT			017.383	3.000	@	4928		-3.000	0.300 NM				02
TF	GT702					017.386	2.262					1.000 NM			GT533	
TF	GT590					017.390	10.738					1.000 NM			GT533	
RF	GT592			L	015.943	161.146	18.868					1.000 NM	5	GTC18	GT533	
TF	GT533					161.146	39.158	+	8500			1.000 NM			GT533	
HM	GT533			L		004.000		+	8500	230		NA			GT533	