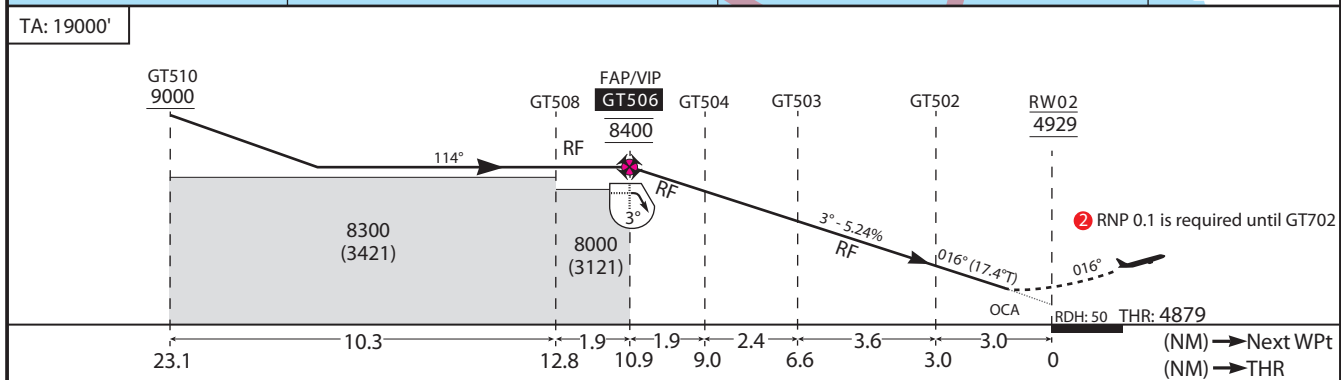
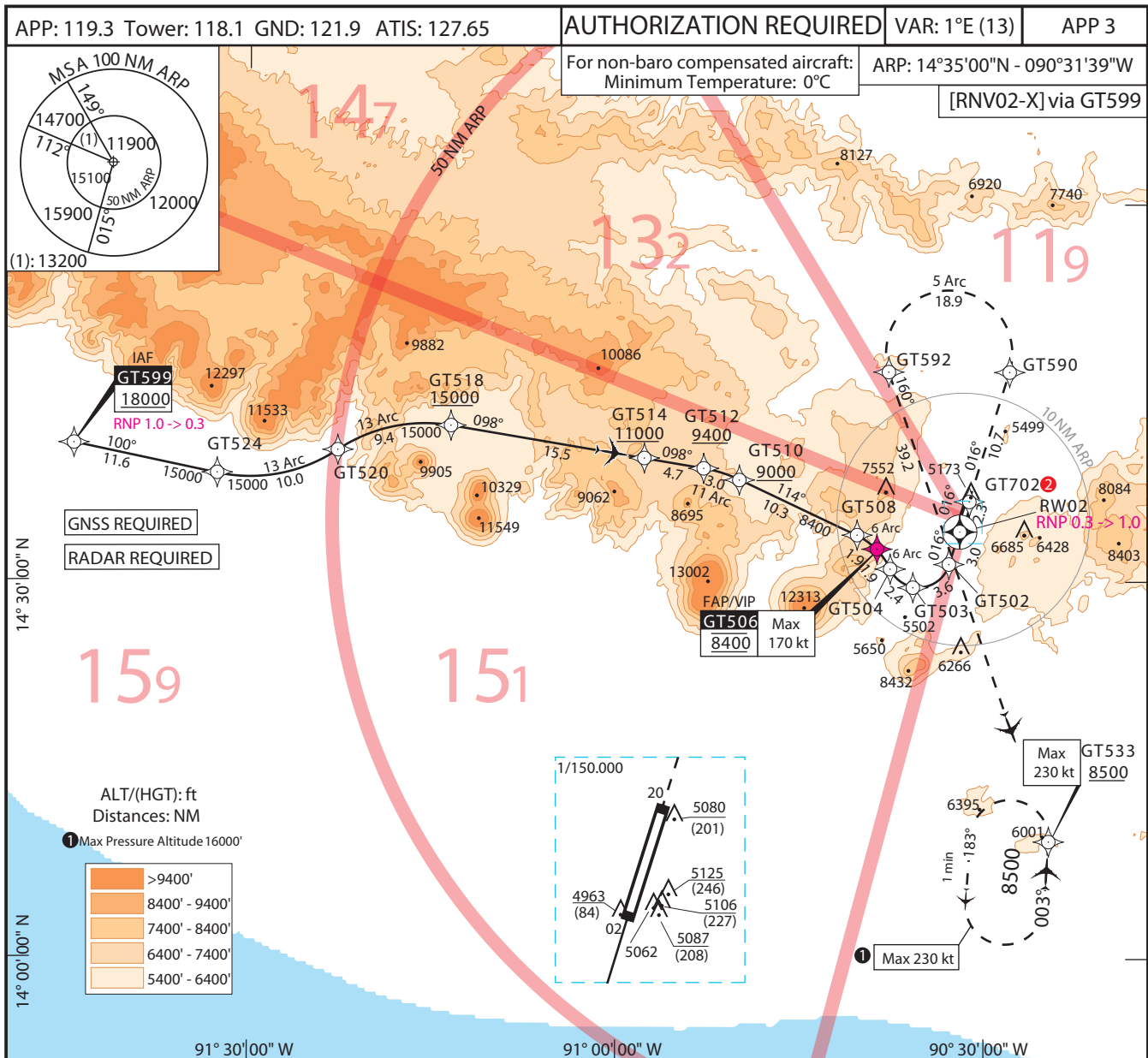


CAT: A B C D
AD ELEV: 4952,THR ELEV: 4879 (166 hPa)

LA AURORA - MGGT
RNAV (RNP) X RWY 02



AD minima: Altitude and Height in feet. REF HGT : THR ELEV.

CAT	M.A. Climb Gradient : 2.5% 152 ft/NM				Missed Approach		
	RNP AR FINAL 0.3		RNP AR FINAL 0.1		Climb to minimum 8500 via the RNAV (RNP) missed approach track GT533. At GT533 hold or start a new approach via GT533.		
	OCA (H)	DA(H)	OCA (H)	DA(H)	CAT	ceiling	visibility
A	5222(343)	5230(351)	5174(295)	5180(301)	A	400 ft	1600 mts.
B	5244(365)	5250(371)		5200(321)	B	400 ft	1600 mts.
C	5264(385)	5270(391)		5220(341)	C	400 ft	1600 mts.
D	5282(403)	5290(411)		5240(361)	D	500 ft	2400 mts.

RNP X RWY 02																
PT	W/P ID	Flyover	Fix role	TD	THETA (°) magnetic	CRS Val (°)	DIST NM	ALT DESC	ALT FT	SPD LMT KT	VRT ANG	NAV PERF	RADIUS NM	ARC CTR ID	Transition Identifier	Runway Direction
IF	GT599		IAF					+	18000			1.000 NM			GT599	
TF	GT524					101.756	11.635					0.300 NM			GT599	
RF	GT520			L	100.346	056.105	9.979					0.300 NM	12.5	GTC07	GT599	
RF	GT518			R	054.645	099.457	9.449	+	15000			0.300 NM	12.5	GTC06	GT599	
TF	GT514					099.457	15.500	+	11000			0.300 NM			GT599	
TF	GT512					099.524	4.746	+	9400			0.300 NM			GT599	
RF	GT510			R	098.084	115.307	3.024	+	9000			0.300 NM	11	GTC05	GT599	
TF	GT508					115.307	10.280					0.300 NM			GT599	
RF	GT506			R	113.888	135.409	1.925	@	8400	170		0.300 NM	5.5	GTC04	GT599	
IF	GT506		FAF					@	8400	170		0.300 NM				02
RF	GT504			R	133.949	155.102	1.890				-3.000	0.300 NM	5.5	GTC04		02
RF	GT503			L	153.642	100.793	2.370				-3.000	0.300 NM	2.5	GTC03		02
RF	GT502			L	099.333	017.383	3.640				-3.000	0.300 NM	2.5	GTC03		02
TF	RW02	Y	MAPT			017.383	3.000	@	4928		-3.000	0.300 NM				02
TF	GT702					017.386	2.262					1.000 NM			GT533	
TF	GT590					017.390	10.738					1.000 NM			GT533	
RF	GT592			L	015.943	161.146	18.868					1.000 NM	5	GTC18	GT533	
TF	GT533					161.146	39.158	+	8500			1.000 NM			GT533	
HM	GT533			L		004.000		+	8500	230		NA			GT533	